

Name _____

Measure Time Intervals

Learning Objective You will measure time intervals in minutes by drawing jumps on a number line or using an analog clock.

Find the elapsed time.

1. Start: 8:10 A.M. End: 8:45 A.M.



35 minutes

2. Start: 6:45 P.M. End: 6:54 P.M.



3. Start: 3:00 P.M. End: 3:37 P.M.



4. Start: 5:20 A.M. End: 5:47 A.M.



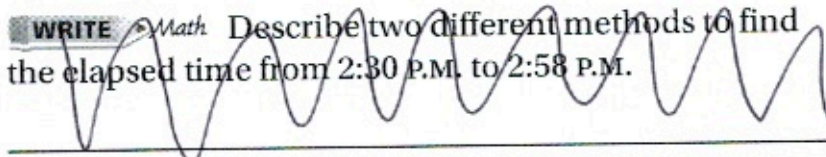
Problem Solving



5. A show at the museum starts at 7:40 P.M. and ends at 7:57 P.M.
How long is the show?

6. The first train leaves the station at 6:15 A.M. The second train leaves at 6:55 A.M. How much later does the second train leave the station?

7. **WRITE** *Math* Describe two different methods to find the elapsed time from 2:30 P.M. to 2:58 P.M.



Lesson Check

1. Marcus began playing basketball at 3:30 P.M. and stopped playing at 3:55 P.M. For how many minutes did he play basketball?
2. The school play started at 8:15 P.M. and ended at 8:56 P.M. How long was the school play?

Spiral Review

3. Each car has 4 wheels. How many wheels do 7 cars have?
4. What number completes the equations?

$$3 \times \blacksquare = 27 \quad 27 \div 3 = \blacksquare$$

5. There are 20 napkins in each package. Kelli bought 8 packages for her party. How many napkins did Kelli buy in all?
6. Mr. Martin drove 290 miles last week. This week he drove 125 miles more than last week. How many miles did Mr. Martin drive this week?

